



Model Train Catalogue

Versions 2.08 and 2.08E

Installation Instructions

Errors and Omissions Excepted: every care has been taken to ensure that all information in this document is present and correct. If any error or omission is found, please let us know and it will be corrected as soon as possible after verification - email to: support@modeltraincatalogue.com.

Copyright Model Train Catalogue - ©April 2018

Ant-Virus Safety

The creators of Model Train Catalogue Software are very aware of the safety necessary to ensure that downloaded programs are free of any viruses, spyware or any other types of malicious infections.

Model Train Catalogue is designed not to be able to carry any viruses, spyware or any other types of malicious infections and is double-checked using McAfee Anti-Virus software. The Model Train Catalogue Site has been 'White Listed' by Symantec (Norton)

Model Train Catalogue software is safe to download and install as long as it is downloaded from www.modeltraincatalogue.com or www.modeltraincatalogue.co.uk.

Windows 7/8/10 Warnings

When downloading Model Train Catalogue software some browsers issue warnings when software packages are unknown to them.

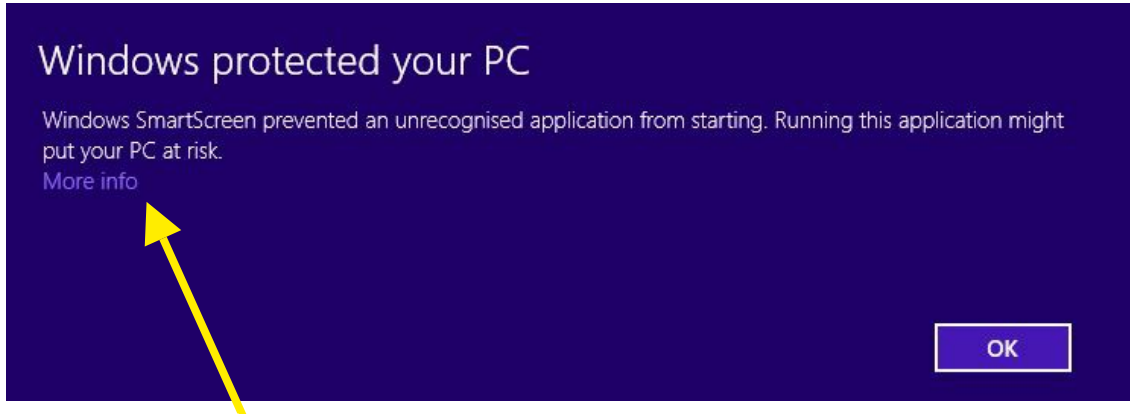
Typically the following warning can be given:



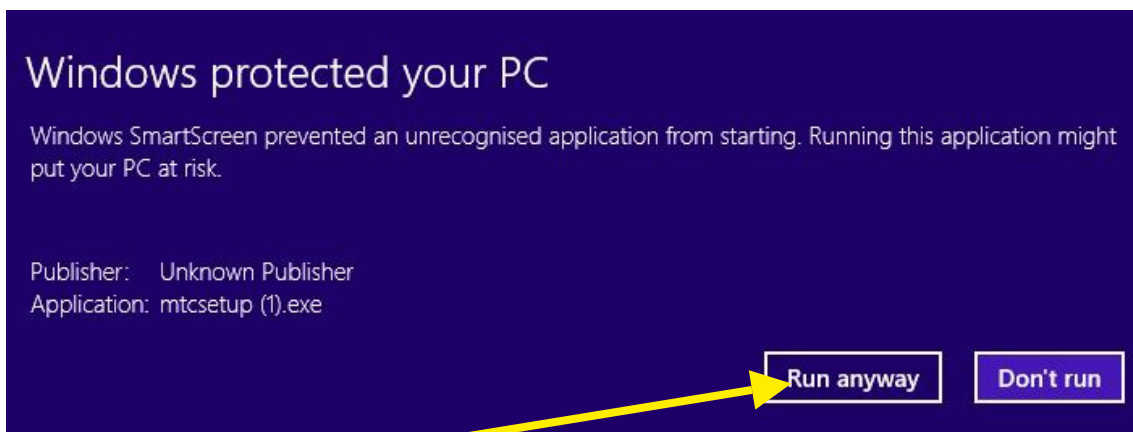
Either Click on the 'X' or use the 'View downloads' button to install the software

Windows 8.1/10 Extra Warning

An extra warning occurs in Windows 8.1



Click on 'More Info' and this appears.....



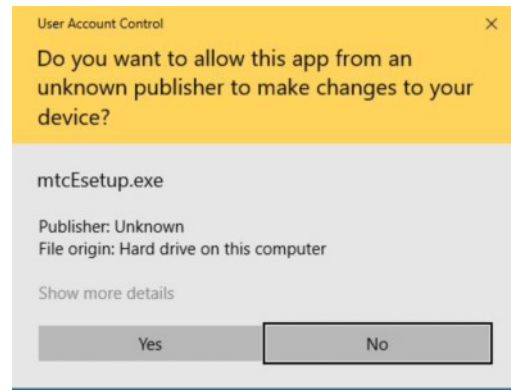
Click on 'Run anyway'

Windows 8.1/10 User Account Control

Click 'OK'

Note:

In Windows 10 build 1709 (and after), if using 'Controlled folder access', the setup file will have to be allowed through by using 'Allow an app through controlled folder access' feature to be found in Settings under Windows Defender's Virus & threat protection settings.



Windows XP Warning

When running mtcsetup.exe, the Model Train Catalogue software installer, some computers issue

warnings when software package publishers are unknown to them.

Typically the following warning can be given:



Mcafee SiteAdvisor Warning

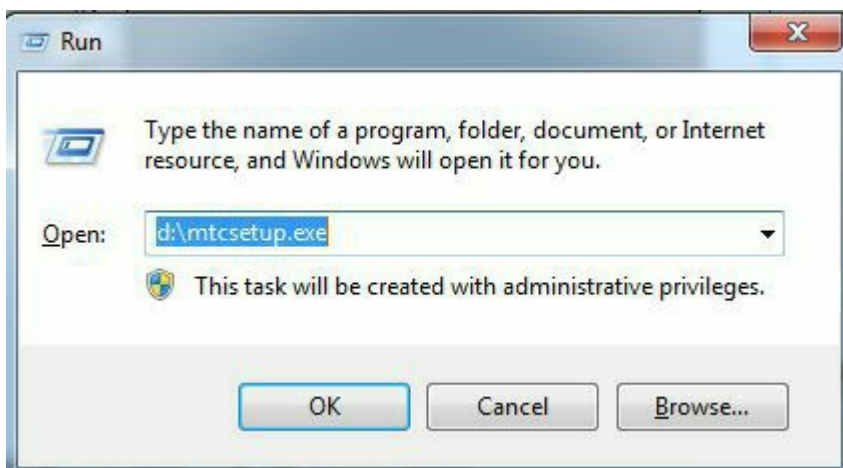
When running mtcsetup.exe, the Model Train Catalogue software installer, some computers issue

warnings when software package publishers are unknown to them.

Typically the following warning can be given:

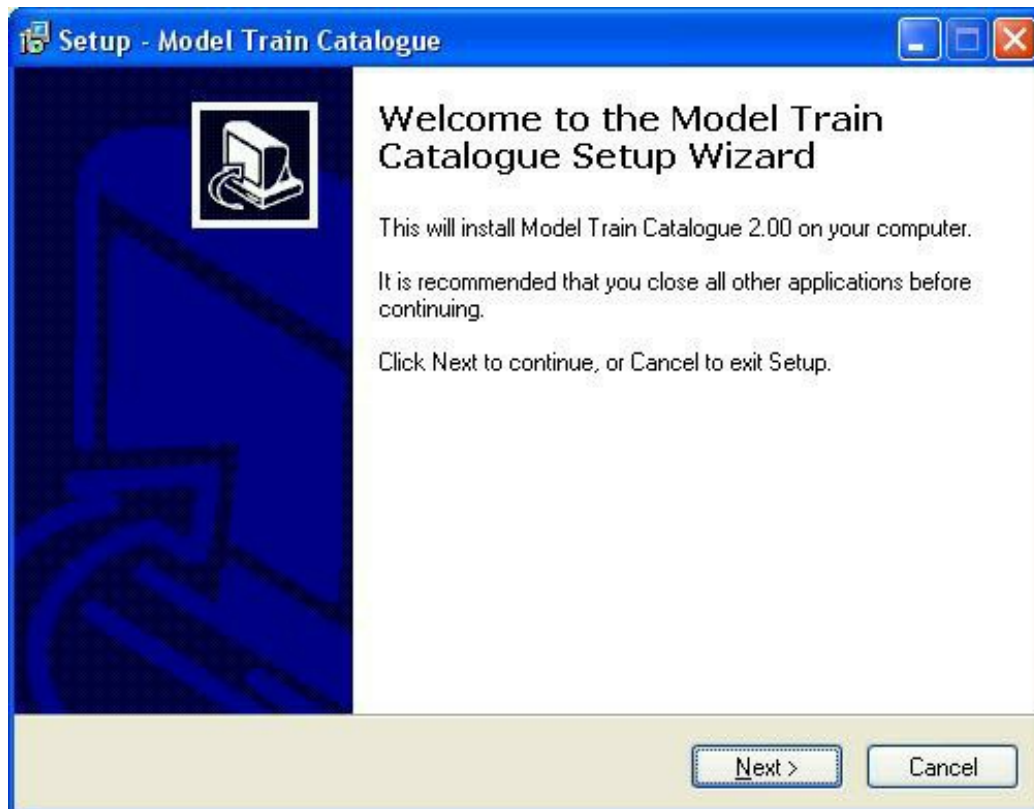


Press the Windows Key and 'R' together to bring up the RUN box.

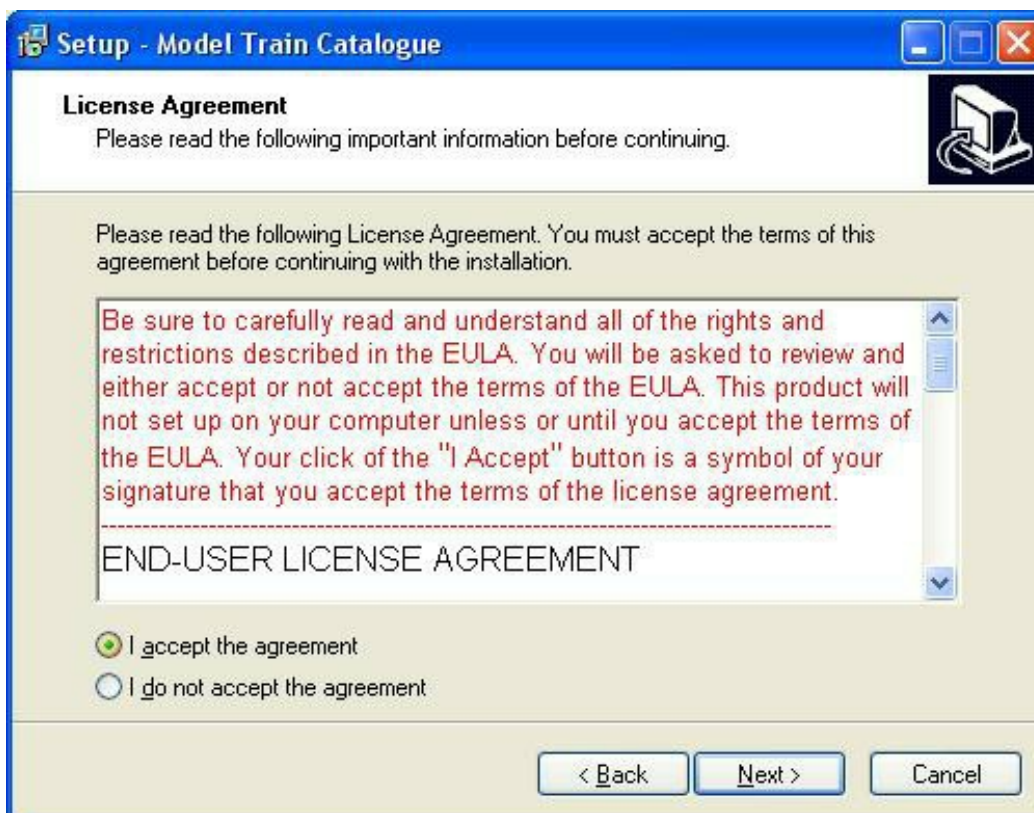


Either Browse to location of mtcsetup.exe or type it in if the location is known in full.

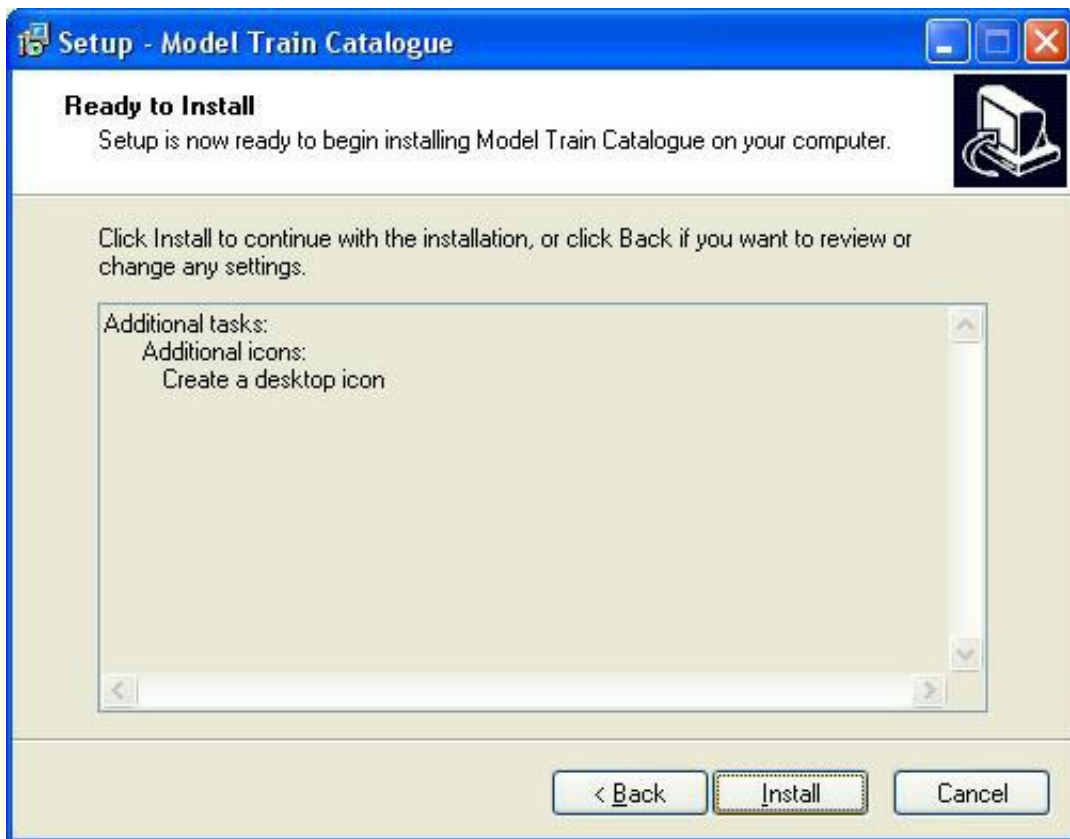
Then Click the 'OK' Button.



Click the 'Next' button.



If the End User Licence Agreement is acceptable, Click Acceptance and then Click the 'Next' button.



Click the 'Install' button and the Model Train Catalogue will install.



Click the 'Finish' button and the Model Train Catalogue is ready to use.